

Kyrie (de Beata Virgine) à4

Anonymous (ca. 1510)
D-Ju MS 35: ffol. 57v-59

Canto

Ky - ri - e Ky - ri - e e - le -

Alto

Ky - ri - e e - le -

Tenor

Ky - ri - e e - le -

Basso

Ky - ri - e e - lei - i - son Ky - ri - e

8

i - son Chri - ste e - le i - son e - le -

i - son Chri - ste Chri - ste e - le -

i - son Chri - ste

15

e - lei - son Chri - ste e - lei - son e -

i - son Ky - ri - e e - le -

i - son. Ky - ri - e e - lei -

e - le - i - son. Ky - ri - e Ky -

23

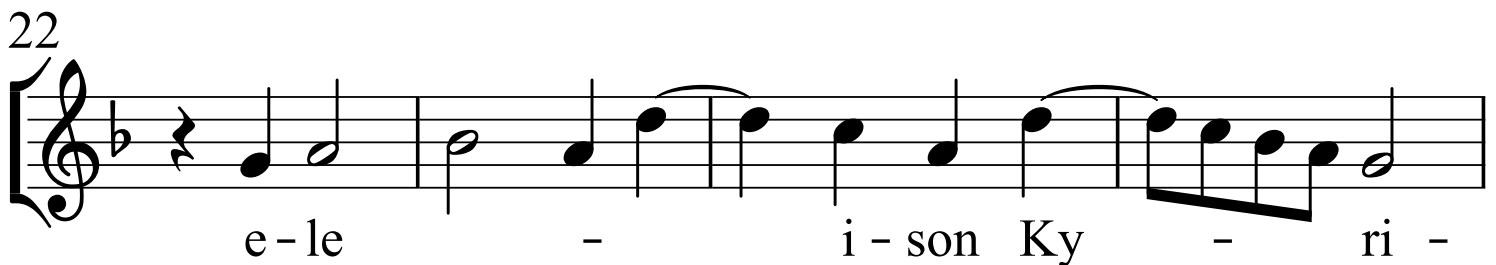
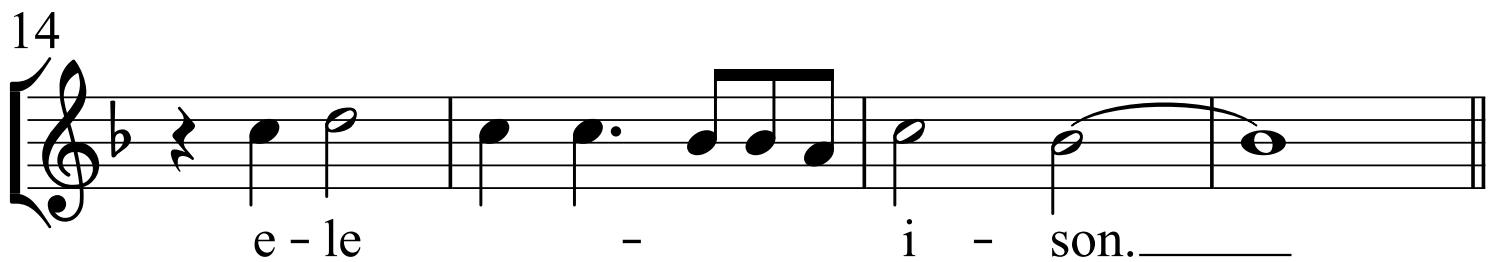
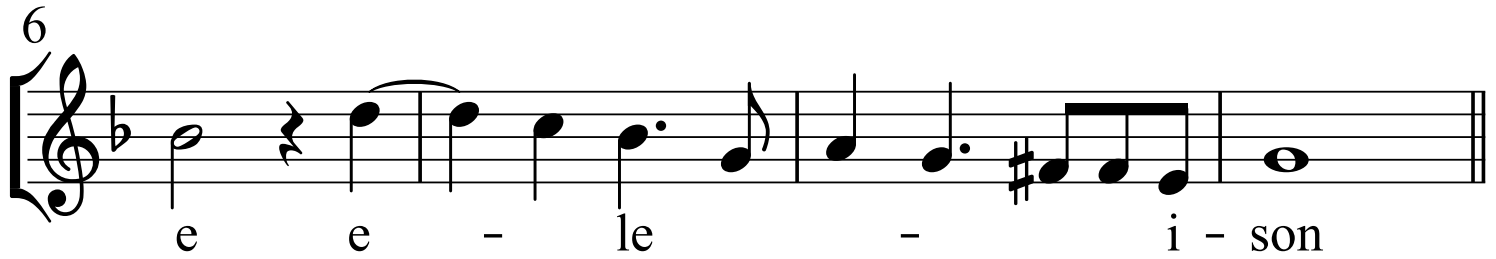
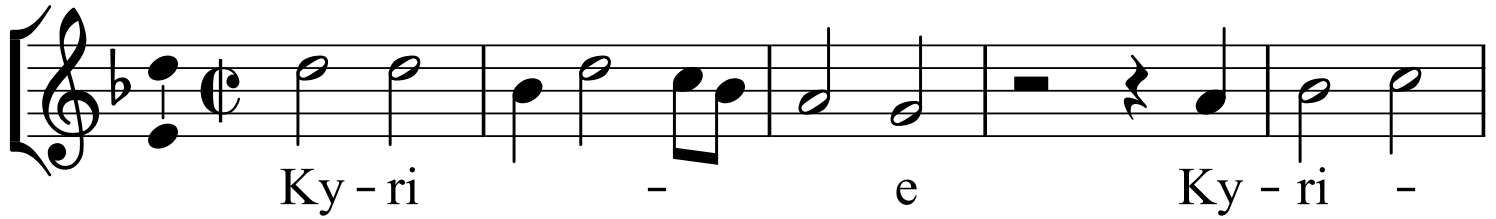
le - i - son. Ky - ri - e e - le i - son.

son Ky - ri - e e - le i - son.

ri - e e - le i - son.

son ky - ri - e e - le i - son.

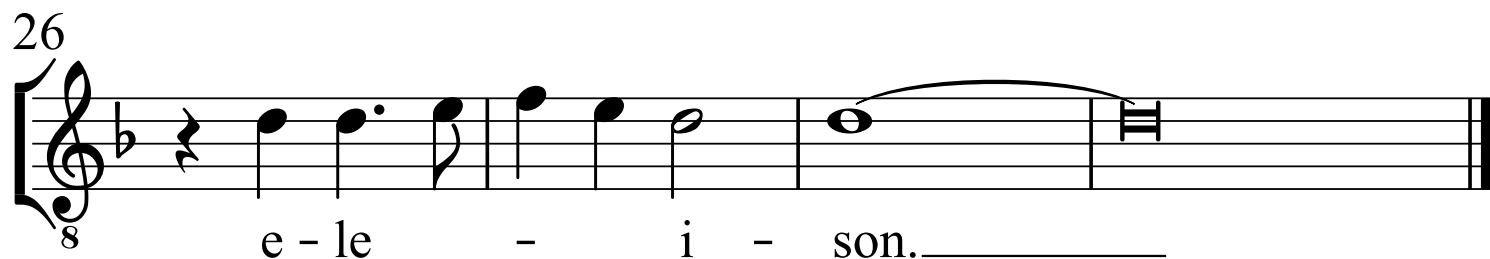
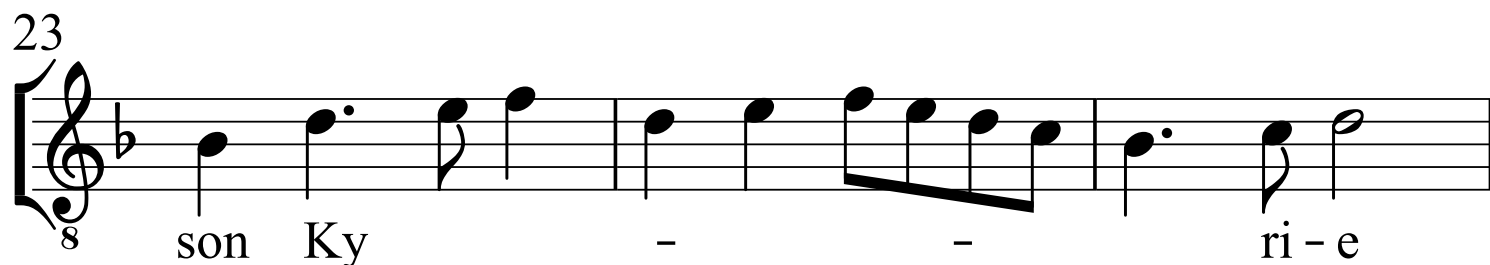
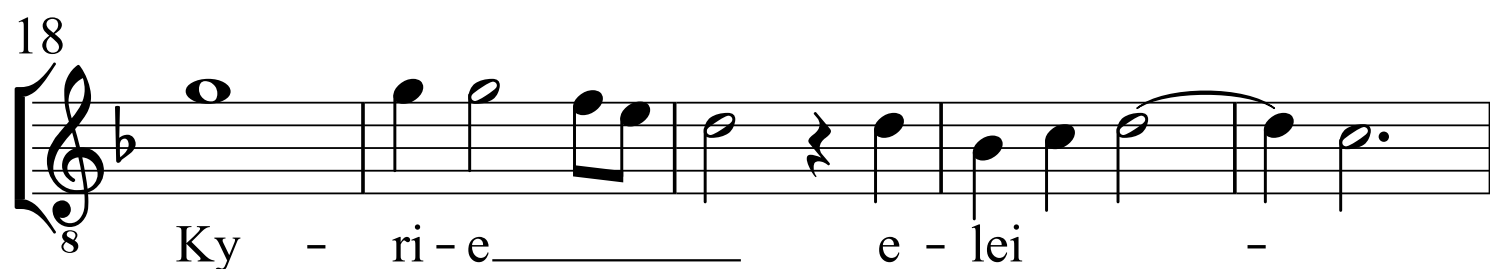
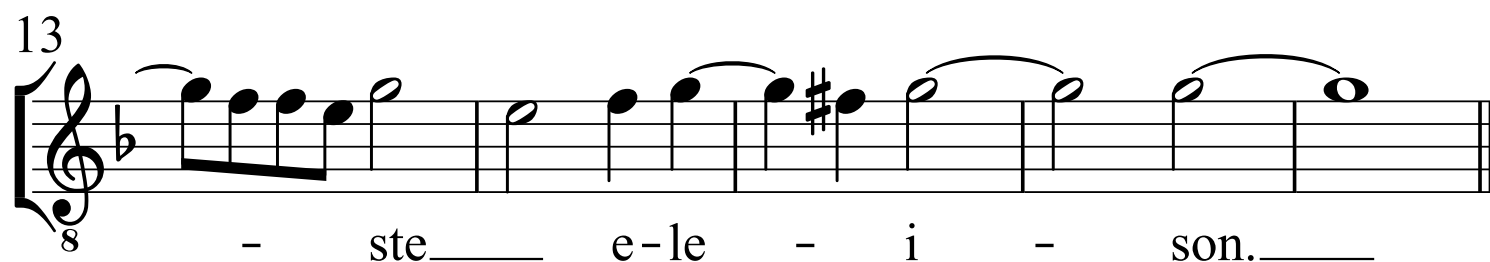
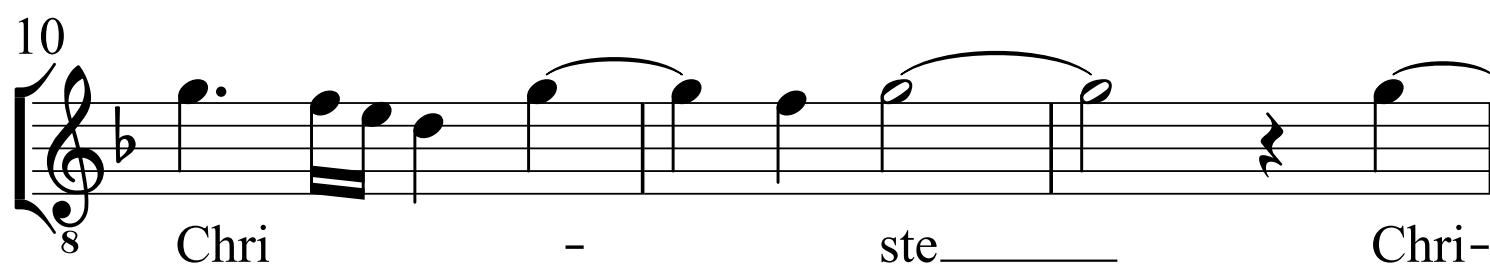
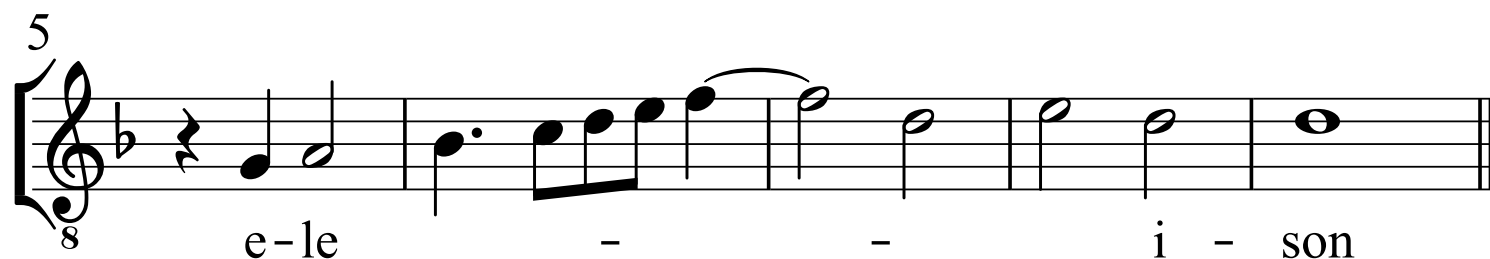
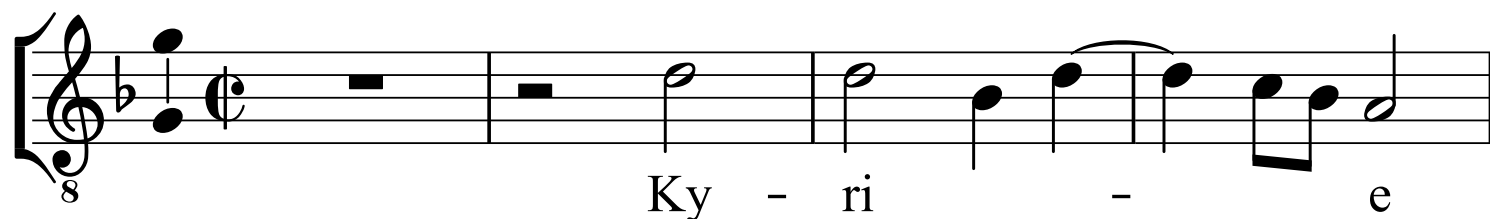
Kyrie (de Beata Virgine) à4



Alto

Kyrie (de Beata Virgine) à4

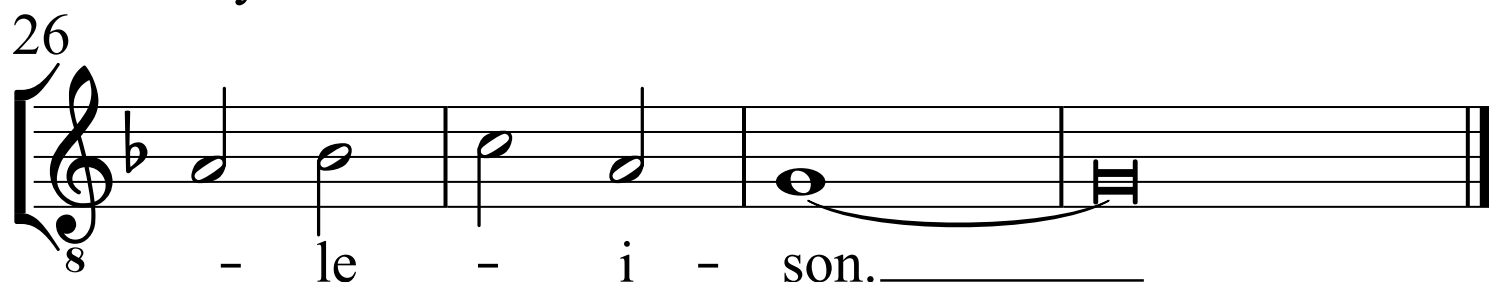
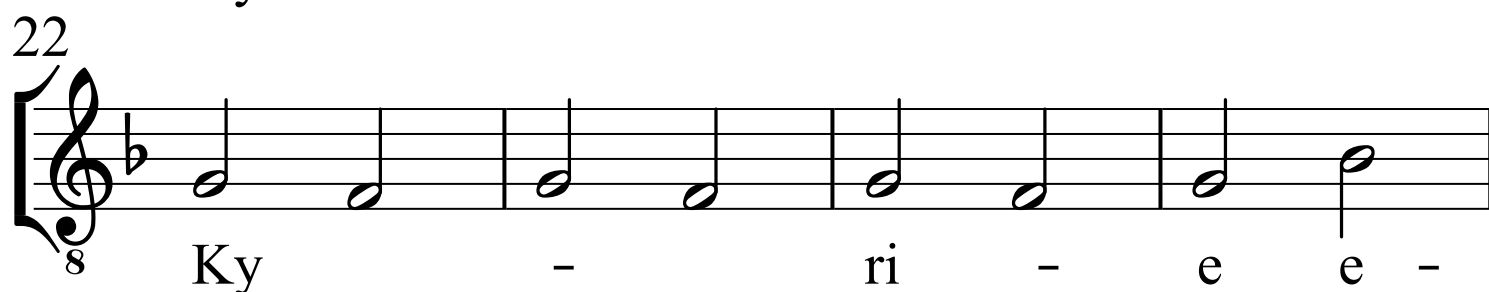
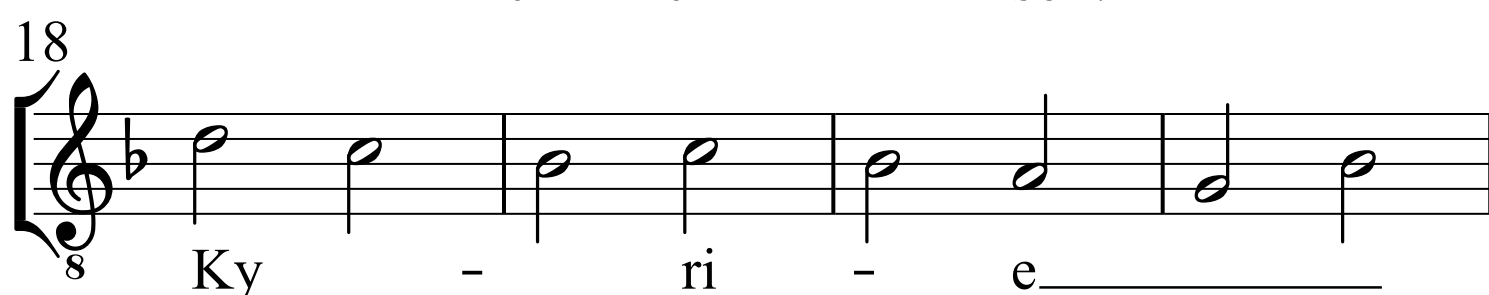
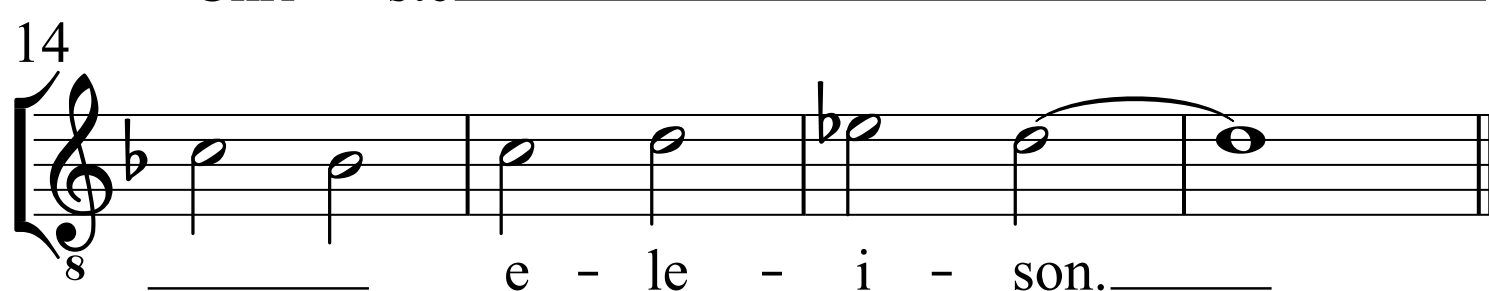
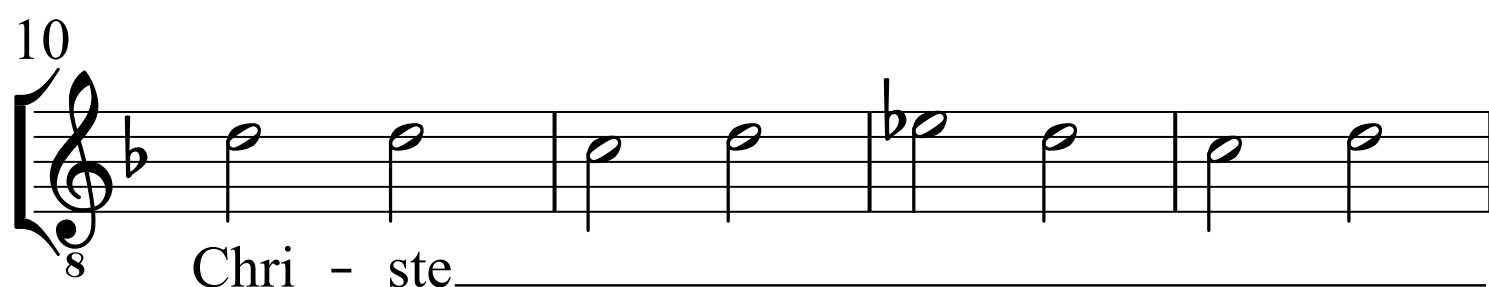
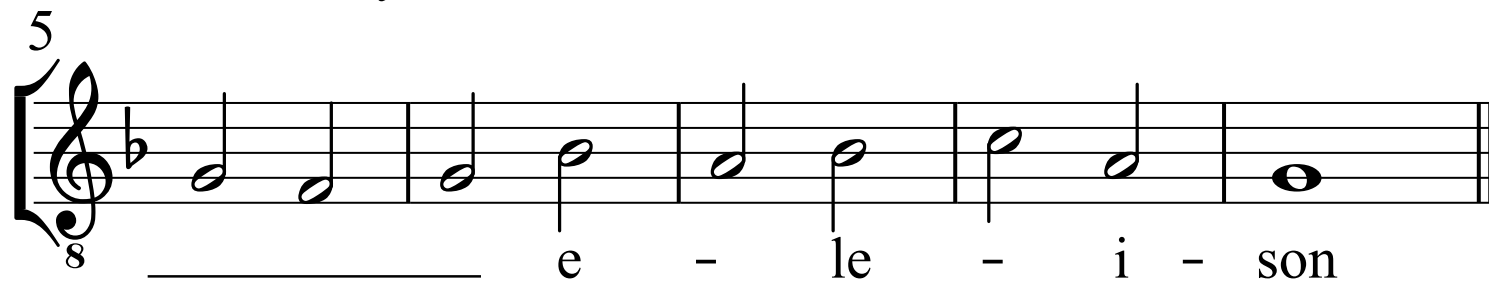
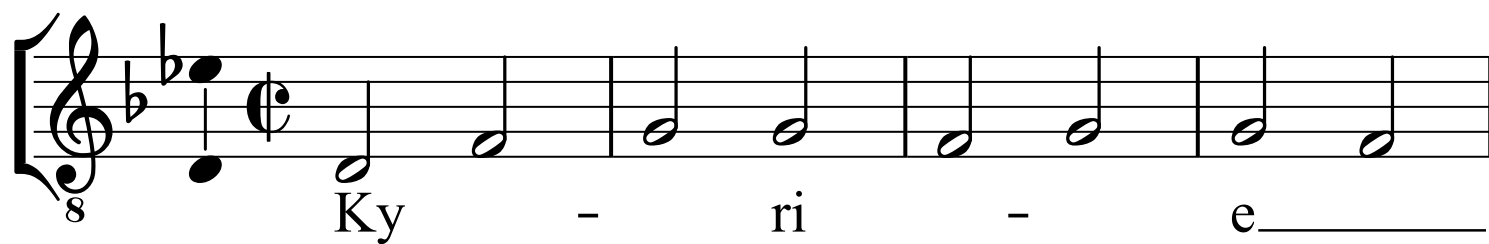
Anonymous (ca. 1510)
D-Ju MS 35: ffol. 57v-59



Tenor

Kyrie (de Beata Virgine) à4

Anonymous (ca. 1510)
D-Ju MS 35: ffol. 57v-59



Basso

Kyrie (de Beata Virgine) à4

Anonymous (ca. 1510)
D-Ju MS 35: ffol. 57v-59

